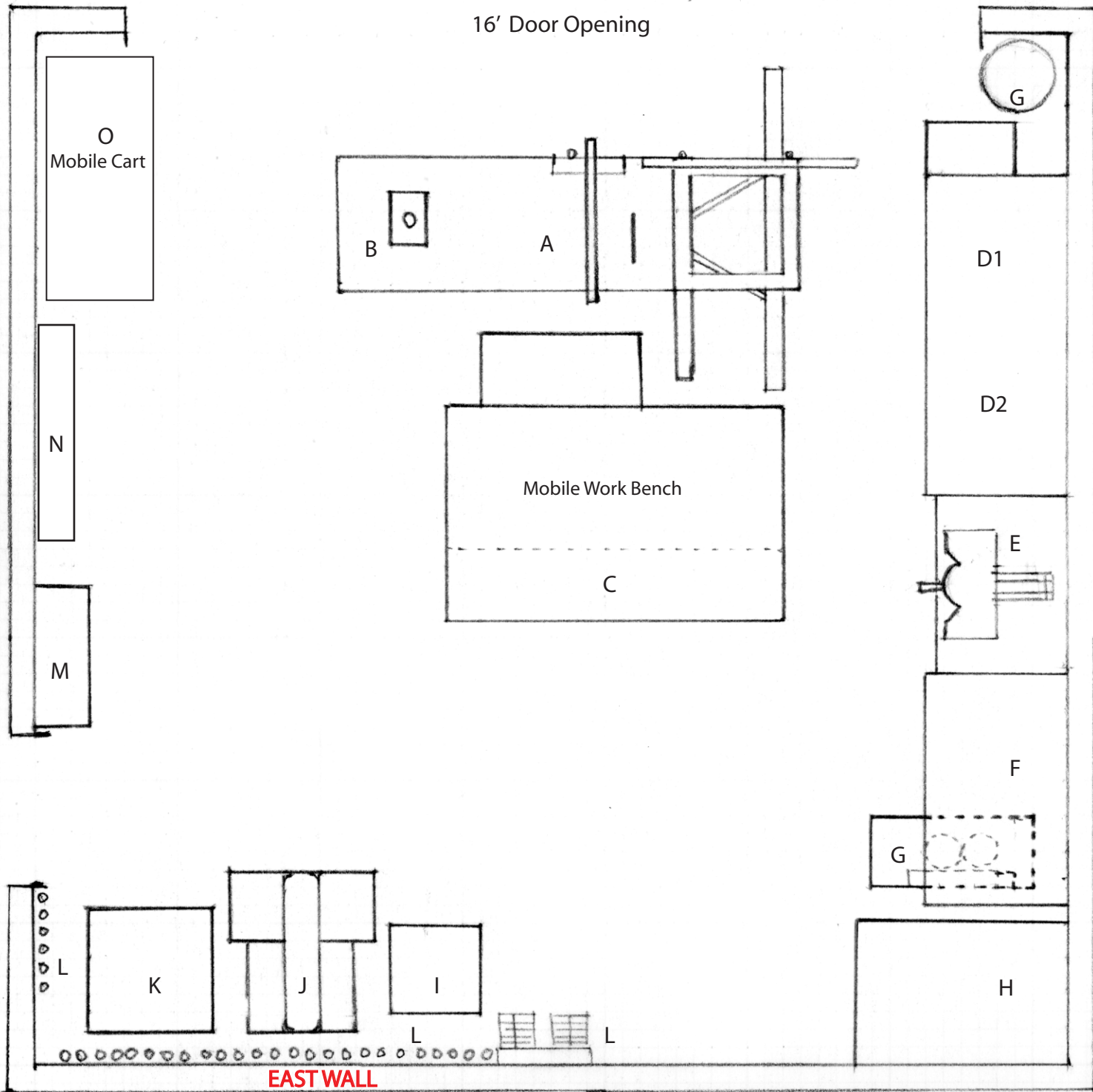


16' Door Opening

SOUTH WALL

NORTH WALL



SHOP AREA 19'4" x 19'4"

A - Delta Unisaw w/ 52" Extension,
Excalibur Sliding Table & Mobile Base

B - Jessem Mast-R- Lift
Porter Cable - 3Hp Router
Adjustable Router Fence

C - Mobile Work Bench - 76"W 36"H 49"D
w/ Flip Down Extension & Storage:
Porter Cable - 3 Routers/ Biscut/ Sanders
Micro Fence - Full System
Haubold - Nailers & Staple Guns
Grex - Headless Nailer
Makita - 3 Cordless Hand Drills
Blum - Hinge Jig
Layout & Hand Tools / Fastners

D1- Cabinet - Top 72"W 32"D
Storage Area 72"W 40"H 24"D:
SprayTech - Airless Sprayer
Senco - Portable Compressor
Porter Cable - Dovetail Machine
D2- Makita - Portable Table Saw
Kreg - Jig System

E - Hitachi - Sliding Compound Chop Saw
Cabinet - Top 38"W 30"D
Freud - Edge Bander
6" Grinder
DeWalt - Reciprocating Saw

F - Cabinet Top - 55"W 32"D
Storage - 32"W 40"H 24"D

G - Air Compressor w/ Xtra tank

H - Plywood Storage - 30" x 48"

I - 14" Band Saw w/ Mobile Base

J - Delta - Radial Drill Press
w/ Mobile Base

K - Delta - 15" Planer
w/ Mobile Base

L - Pipe Clamps 16" - 102" Long
Assorted Hand & Spring Clamps

M - Cabinet 33"W 96"H 12"D

N - Current project materials
O - 6 Mobile Furniture Carts
24" x 54"

Lumber Storage above - D, E, F